

Contact Us

# Sahary Global Steels

**Fabrication & Contracting EST.**

Mansour Thamer T. Al-Melham

www.saharyglobalsteels.com



## Sahary Global Steels

Post Box: 5267, Dammam - 31537  
Kingdom Of Saudi Arabia.

Tel: +966 3 8210 303, Fax: +966 3 8192 033

E-mail: [info@saharyglobalsteels.com](mailto:info@saharyglobalsteels.com)

URL: [www.saharyglobalsteels.com](http://www.saharyglobalsteels.com)



# **Sahary Global Steels**

**Fabrication & Contracting EST.**  
Mansour Thamer T. Al-Melham



[www.saharyglobalsteels.com](http://www.saharyglobalsteels.com)



We are pleased to introduce ourselves as **Sahary Global Steels (SGS)** is an established Saudi Contracting Company engaged in Construction, Contracting and Trading in the Energy Sector of Saudi Arabia.

SGS is established in 1989. The establishment with diverse activities, offers comprehensive services to the Oil & Gas, Petro Chemical sectors, with our sufficient manpower and construction equipments.

SGS is specialized in energy sector constructions and is into the following diversified construction activities.

- Structural Fabrication and Erections.
- Plant Piping and Pipeline works.
- Electrical and Instrumentation works.
- Scaffolding works.
- FRP Services.
- Heavy Equipment and Manpower Logistics.

Sahary global steels, a new division in the field of steel fabrication and contracting was established in the year of 2010 as a new branch in " Mansoor Thamer T Al Mulhim Group Of Companies ". We have been mainly engaged with structural steel fabrication, erection and contracting services in the kingdom of Saudi Arabia.

With a greater vision to provide quality service in the fast growing industrial sector, We started this structural steel division with complete dedication. Our production team combined with our customer focused delivery schedules enable us to provide our clients with complete solutions to meet all their project requirements.





## Mission

" To grow with the nation by performing our services to the highest ethical and professional standards, thereby contributing to the nation's energy sector and emerge as a fore runner in the industry ".

## Vision

" To be the prime EPC Company in the middle east."



## Value

" At Sahary Global Steels, our fore most objective resides in creating the wealth of confidence among clients and employees. Through years of hard work, dedication and respect, we are mutually progressing towards the peaks of excellence. SGS is firmly grounded on its principles of providing value through trust ".



## Our Fabrication Facilities



[www.saharyglobalsteels.com](http://www.saharyglobalsteels.com)



**Tank Work at Dammam Tank Firm.**  
**Global Environmental Management Service**







## Supply and Installation Fencing Works at Yansaf





Kjoial -Turki - Enhancement of crude  
export Facilities - Piping works



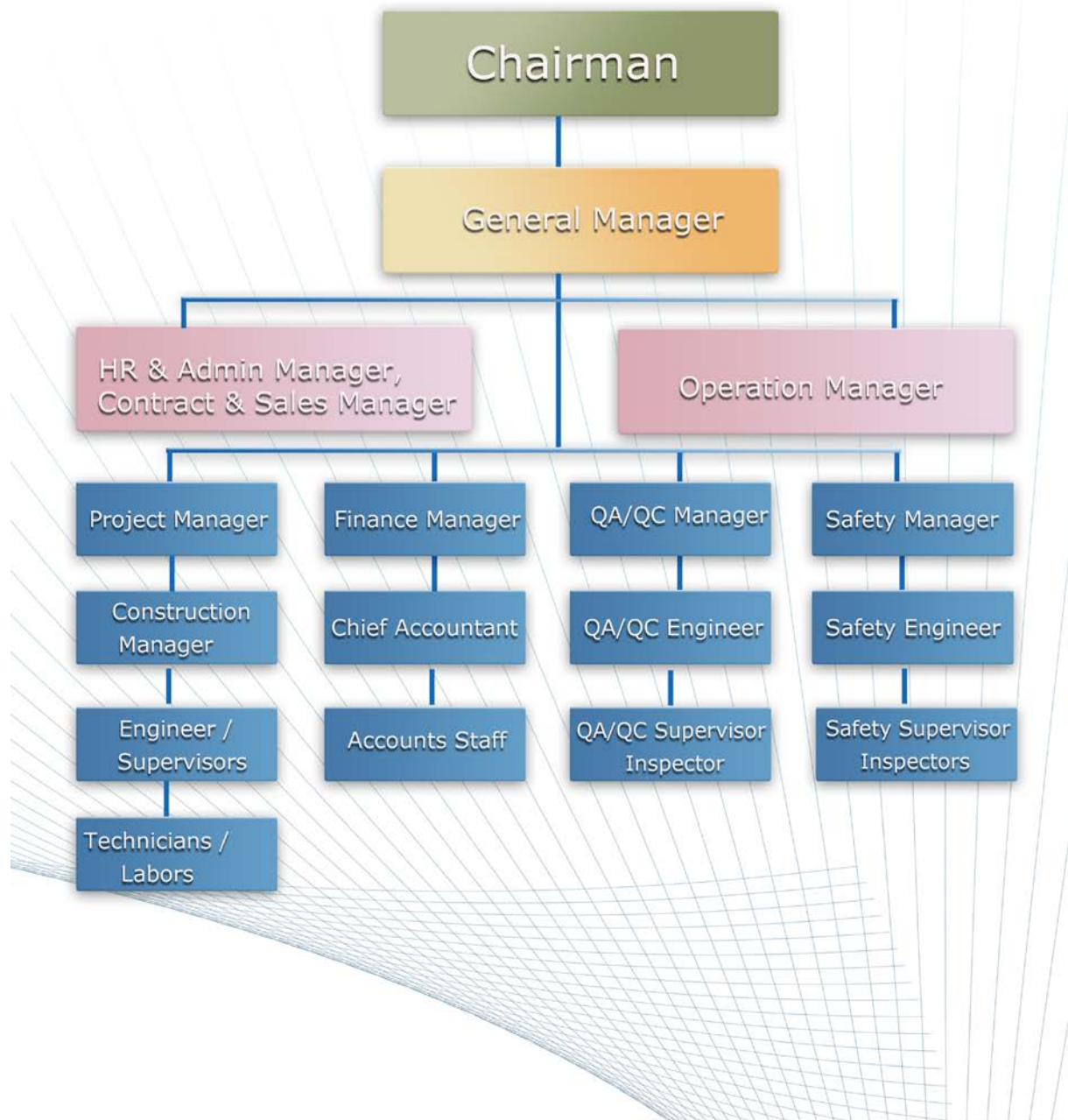
Crude Transmission facility 24" Dia - Yukse  
Co.Ltd Munifa to Razal Zour 89 KM







## Organizational chart





## HSE Policy

We care for Health, Safety and Environment and give prime importance for maintaining Health, Safety and Environment Program, confirming to the best practices and standards of the industry and to maintain it in all its activities.

We do comply with all applicable standards of Health, Safety and Environmental regulations and standards, and will provide procedures, instructions and training to all its employees for meeting their requirements.

We do care for establishing and maintaining a safe working environment for obviating recognized health, safety and environmental hazards and committed to maintain and recognized health, safety and environmental hazards and committed to maintain and support employee safety programs so as to ensure that all necessary steps are taken to prevent operations affecting all the employees and those personnel connected directly or indirectly with the company such as Visitors, Suppliers, Subcontractors, Customers, Public Authorities, Local Communities, etc.

We do ensure for Continuous Improvement in HSE through periodical reviews, feedbacks on HSE Management, Programs, Procedures, Resources, and performance. Employees are encouraged to perform and develop proper work habits, to ensure a safe working environment and thereby achieve ZERO TARGET





## Quality Policy

We are committed to provide highest quality service to our clients by exceeding their expectations through active employee involvement.

Our aim is to provide most efficient and accurate services to the total satisfaction of our clients by:

Monitoring the progress of each project/job efficiently and controlling the execution by adapting and implementing the latest project management practices.

Providing regular training to our staff in all aspects of quality, safety, health and environmental care, reliability at the core of all aspects of our business and strive for continual improvement.

Establishing a frame work for fast and easy adaptation to changing industry trends and requirements.

Communicating that quality is the responsibility of every employee and every function.

Developing meaningful and widespread employee involvement, team, work and personal satisfaction that results in pride of workmanship.

SABU MANTHANATH  
General Manager







## Managers and Administration

Sr.No	Category	Saudi	Indian	Pilipino	Pakistani	Nepali	Bengali	Others	Total
01	Project Manager Mech.	0	01	0	0	0	0	0	01
02	QA/QC Manager Mech.	0	01	0	0	0	0	0	01
03	QA/QC Manager Civil	0	0	01	0	0	0	0	01
04	HSE Manager	0	01	0	0	0	0	0	01
05	Admin Manager	0	01	0	0	0	0	0	01
06	HR Manager	0	01	0	0	0	0	0	01
07	Personnel Manager	0	01	0	0	0	0	0	01
08	Finance Manager	01	0	0	0	0	0	0	01
09	Chief Accountant	0	0	01	0	0	0	0	01
10	Office Staff	03	01	02	0	0	0	0	06
11	PRO	01	0	0	0	0	0	0	01
								<b>Total</b>	<b>16</b>

## Health Safety and Environment

Sr.No.	Category	Saudi	Indian	Pilipino	Pakistani	Nepali	Bengali	Others	Total
01	Safety Engineer	0	01	0	0	0	0	0	01
02	Safety Supervisor	0	01	0	0	0	0	0	01
03	Safety Inspector	0	01	02	0	0	0	0	03
04	Asst. Safety Inspector	0	02	01	0	0	0	0	03
								<b>Total</b>	<b>08</b>



## List Of Manpower

### Mechanical Division

Sr.No	Category	Saudi	Indian	Pilipino	Pakistani	Nepali	Bengali	Others	Total
01	Engineer	0	02	0	0	0	0	0	02
02	Supervisor	0	02	01	0	0	0	0	03
03	Foreman	0	02	02	0	0	0	0	04
04	QA/QC	0	01	01	0	0	0	0	02
05	Welding Inspector	0	02	02	0	0	0	0	04
06	Welders/GTAW+SMAW	0	04	04	03	0	0	0	11
07	Welders/SMAW (6G)	0	03	02	02	0	0	0	07
08	Welders/ (3G)	0	02	02	0	02	01	0	07
09	Pipe Fabricators	0	03	01	01	01	03	0	09
10	Pipe Fitters	0	02	02	0	01	01	0	06
11	Tank Fabricators	0	03	01	01	01	01	0	07
12	Structural Fabricators	0	03	0	03	01	01	01	09
13	Erectors	0	0	0	03	01	02	0	06
14	Insulators	0	0	0	02	01	0	0	03
15	Mechanical Fitters	0	0	02	0	0	0	0	02
16	Millwright Fitters	0	02	01	0	0	0	0	03
17	Calder	0	0	01	01	0	0	0	02
18	HVC Technicians	0	0	02	0	02	0	0	04
								<b>Total</b>	<b>91</b>





## General Service

Sr.No	Category	Saudi	Indian	Pilipino	Pakistani	Nepali	Bengali	Others	Total
01	Scaffolder	0	03	0	0	01	01	0	05
02	Crane Operator (25 Ton)	0	0	0	01	0	0	0	01
03	Crane Operator (50 Ton)	0	02	01	01	0	0	0	04
04	Shawl Operator	0	01	02	01	0	0	0	04
05	Porcelain Operator	0	0	0	01	0	0	0	01
06	Backhoe Operator	0	01	0	0	0	0	0	01
07	Loader Operator	0	0	0	01	0	0	0	01
08	Roller Operator	0	0	0	01	0	0	0	01
09	Compactor Operators	0	0	0	01	01	0	0	02
10	Riggers Level (I)TUV	0	02	02	01	01	01	0	07
11	Riggers Level (II) TUV	0	02	0	03	0	0	0	05
12	Riggers Level (III) TUV	0	0	0	08	0	0	0	08
13	Heavy Duty Drivers	0	0	0	02	01	01	0	04
14	Light Drivers	0	0	02	02	01	0	01	06
15	Concert Pump Operator	0	0	0	01	0	0	0	01
16	Helpers / Labours	0	05	0	03	02	02	0	12
17	Watch Man	03	0	0	0	01	0	0	04
18	Tea Boy	0	0	0	0	01	0	0	01
19	Cleaners	0	0	0	0	0	03	0	03





## Managers and Administration

Sr.No	Category	Saudi	Indian	Pilipino	Pakistani	Nepali	Bengali	Others	Total
01	Project Manager Civil	0	01	0	0	0	0	0	01
02	Project Manager Mech.	0	01	0	0	0	0	0	01
03	QA/QC Manager Mech.	0	01	0	0	0	0	0	01
04	QA/QC Manager Civil	0	0	01	0	0	0	0	01
05	HSE Manager	0	01	0	0	0	0	0	01
06	Admin Manager	0	01	0	0	0	0	0	01
07	HR Manager	0	01	0	0	0	0	0	01
08	Personnel Manager	0	01	0	0	0	0	0	01
09	Finance Manager	01	0	0	0	0	0	0	01
10	Chief Accountant	0	0	01	0	0	0	0	01
11	Office Staff	03	01	02	0	0	0	0	06
12	PRO	01	0	0	0	0	0	0	01
								<b>Total</b>	<b>17</b>





## Equipment List

### Civil Division

Sr. No.	Item Description	Year of Manufacture	Location	Total
01	Porcelain	2003	Jeddah and Jubail	01
02	Backhoe	2001	Jeddah	01
03	Loader	2000	Dammam	01
04	Compactor	1999	Riyadh	01
05	Jumping Compactor	2005	Riyadh, Jubail, Jeddah	04
06	Asphalt Cutter (Automatic)	2003	Riyadh, Dammam	01
07	Asphalt Coring Machine (6 inch dia)	2001	Riyadh, Dammam	01
08	Coring Machine (2-4 inch dia)	2001	Jeddah, Jubail	01
09	Excavator	2001	Jubail	01
10	Shovel	2001	Jubail	01
11	Cater Pillar	1999	Jeddah	01
12	Bob cat	2005	Jeddah, Riyadh, Jubail	04
13	Concert Coring Machine	2003	Riyadh, Jeddah	01





## Mechanical Division

Sr. No.	Item Description	Year of Manufacture	Location	Total
01	Welding Machine (Generator)Miller	2005	Dammam, Jubail	04
02	Welding Machine (Generator)Lincoln	2002	Jeddah, Dammam	02
03	Welding Machine Rectifier	2002,2006	Jubail,Jeddah,Riyadh	12
04	Tig welding Set	2008	Jubail,Jeddah,Riyadh	04
05	Robotic Gas Cutter	2008	Dammam	03
06	Manual O/A cutting Set	2003	Jubail,Riyadh	08
07	Plasma Cutter	2006	Dammam	01
08	Mother Oven	2008	Jubail,Damma,Riyadh	03
09	Portable Oven	2009	Jubail,Damma,Riyadh	09
10	Chain Block 2 Ton 6 Mtr long	---	Jubail,Damma,Riyadh	04
11	Chain Block 5 Ton 10 Mtr long	---	Jubail,Damma,Riyadh	03
12	De-Shackle 2 ton to 32 ton	---	Jubail,Damma,Riyadh	14
13	AG 7 Grinding Machine m/c 110 Volt	2010	Jubail,Damma,Riyadh	26
14	AG 4 Grinding Machine m/c 110 Volt	2009,2010	Jubail,Damma,Riyadh	19
15	Pipe Racer 2' and 4'	---	Jubail,Damma,Riyadh	21 Set
16	Manual Cold Cutting Machine	2004	Shutgom	01
17	Torque Panel Heavy Duty	2006	Jubail	09 Set
18	Impact Machine 1" Drive	---	Dammam	04 Set
19	Rolling Machine Upto 16mm thick	2000	Dammam	01
20	Bending Machine	2000	Dammam	01
21	Sand Blasting Unit	2002	Jubail,Dammam,Riyadh	01
22	Painting Unit	2002	Jubail,Dammam,Riyadh	01
23	Welding Helmet	---	---	120
24	Face Shield	---	---	210
25	Tools Box	---	---	180
26	Electric Blower	---	---	25
27	Bevel Gauge	---	---	12
28	Argon Cylinder	---	---	13
29	Oxygen Cylinder	---	---	11
30	Acetylene Cylinder	---	---	17





## Completed Project

Contract Start Date	Clients Details	Nature of Work	Completion Date
16/5/1989	Port Trust - Jubail	Dammam Port Housing Complex- MEP Work	14/10/1991
12/6/1991	Private - Jubail	Fire fighting installation.	27/5/1992
10/6/1992	Private - Dammam	Irrigation Pipe line installation	24/4/1993
17/4/1993	Private - Dammam	Wheat Storage Tank. (Cone Type)	12/12/1993
21/2/1994	Royal Commission –Jubail.	Fabrication and installation of Fence Work	3/3/1995
6/4/1995	SRB-Hawtah, Riyadh.	Site Fabrication and installation of Trunk Line and Flow Lines.	1/1/1996
16/7/1997	Al-Ghadeer Est(Sub-Contract) Dammam	Fabrication and Installation of 110x122 Sq.Mtr Pre-Engineering Warehouse.	6/3/1998
6/6/1998	Al-Mutlaq (Sub-Contract) Rastanura.	Fabrication and Installation of Pre-Engineering Building. (225x80 Sq.Mtr.)	2/5/2000
7/7/2000	Al-Ghadder (Sub-Contract) Riyadh.	Residential Complex Al-Khobar HVAC-Installation including Ducting.	5/6/2001
6/12/2001	Al-Rajhi Bank (Dir. Contract)	Installation of Sewage System. RTR Piping.	4/4/2002
7/12/2002	(Sub-Contract) ALASCO	Jubail Port- Up gradation of Fire Fighting System. Electro Mechanical Work.	1/11/2003
10/10/2003	(Sub-Contract) ALASCO	Dammam Port- Fabrication and installation of Tank Piping.	2/4/2004
8/4/2004	Sub-Contract, Al-Hussain Energy Services	Jeddah Islamic Port- Erection of Tank (15 Mtr Height and 24 Mtr Dia)	7/6/2005
9/2/2006	(Sub-Contract) Consolidated Contractors C.	Petro Rabigh, Fabrication and Erection of Steel Structure and Piping	8/8/2006
15/9/2006	(Sub-Contract) National Industrial Resources	Saudi Kayan, Supply of Engineers, QA/QC and Safety Personnel	12/7/2007
8/8/2007	Global Environmental Management Service (GEMS)	Dammam Tank Firm, 10 Meter to 17 Meter various size. Dia and 10 Mtr to 15 Mtr height.	5/6/2008
10/9/2008	Global Environmental Management Service (GEMS)	Dammam Tank Firm, Piping work related to Tank firm.	8/12/2009
12/9/2008	Al-Turki Co.ltd.	Up gradinage Drainage System in Jubail	21/12/2009

Contact Us

# Sahary Global Steels

**Fabrication & Contracting EST.**

Mansour Thamer T. Al-Melham

www.saharyglobalsteels.com



## Sahary Global Steels

Post Box: 5267, Dammam - 31537  
Kingdom Of Saudi Arabia.

Tel: +966 3 8210 303, Fax: +966 3 8192 033

E-mail: info@saharyglobalsteels.com

URL: www.saharyglobalsteels.com



## Ongoing Projects

Clients Details	Nature of Work	Commence
DOOSAN	Ras Al khair-Intake Pumping Station	
MARAFIQ	3180 FSB-Yambu Power & Water Project	
SEIKO	Saudi Electrical Holding Fabrication	
SIPCHEM	SIEMENS Project (Fabrication&Erection)	
MARAFIQ	Jubail Power &Water Plant (Shutdown)	
SK ENGG	WASIT GAS PROJECT (PIPING)	







## Recently Completed Projects

Contract Start Date	Clients Details	Nature of Work	Commence
1/05/2009	Gulf Steel Works	Jubail Export Refinery (Fabrication of Steel Structural)	Nil
1/08/2010	Issam Kabbani & Partners Co.	Jubail- SABIC, Fabrication, Welding and Erection of 2 inch to 18 inch Corridor Piping.	
15/6/2011	Truba Arabia	Jeddah, Shuiba Power Plant, Fabrication & Erection Turbine Related Piping.	Completing shortly
05/04/2012	Al-Khulood Cont. Co.Ltd	Riyadh, Up gradation of Fire Fighting System.	
10/06/2012	Al-Zamiya Cont.Co. Munifa.	Fabrication and Erection of Steel Structural Steels.	





## Services at SGS

### ***Single Source Responsibility***

SGS provides complete services for steel contracting field including designing, fabrication and erection services to fulfill your needs with single source responsibility, your steel requirement can be realized from concept to full implementation with the need to speak only to one person. Lesser co-ordination for the client results in time savings.

### ***Estimates***

SGS is quick enough to provide firm lump sum or unit price quotations based upon clients drawings within a short time.



### ***Fabrication***

SGS is capable of producing any kind of light, medium & heavy steel structure starting from warehouse steel buildings, hangares, platforms, gratings, floor plates, ladders, stairs, railings, small storage tanks and it goes up to complex structures for process industries. Current capacity is over 300 metric tons of custom fabricated steel. We are very much specialized in the fabrication of unique and complex projects which require a greater degree of technical expertise.



### ***Erection***

SGS has forged several strategic alliances with local steel erectors to provide competent support and installation for labour equipment. We also support our clients for their site installation services, with our own resources when specifically asked for.

### ***Capacity***

SGS operates a 3000mt fabrication facility in Dallah area of Dammam which has 1200mt of covered workspace and the rest as open yard with complete concrete flooring. We employ well trained tradesman including certified welders, expertised fitters, machine operators and painters. Our facility is equipped with complete tools and equipments required for a semi automated structural steel fabrication shop. With the present strength and resources, Our production capacity is standing at 300mt per month on an average.

### ***Objectives***

Our main aim at SGS is to achieve customers satisfaction by extending our quality, service, technical expertise on time delivery habits and entire co-operation to all our customers. Allow us to show you how easy it can be for you when you have one vendor like us. Once you get familiar and satisfied with our services, we are sure that you will be our regular customer.

